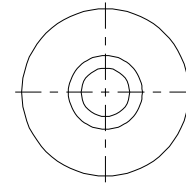
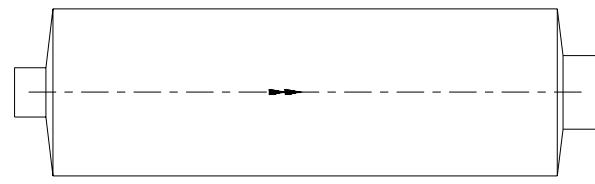
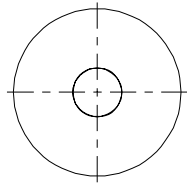
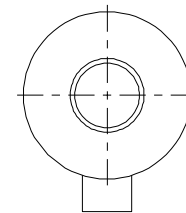
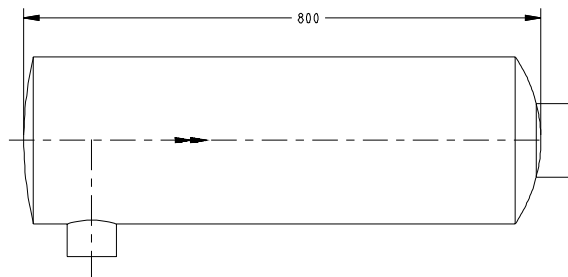
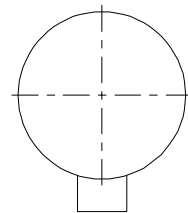


0500-4679 A1 PRO/ENGINEER

REL NO	LTR	NO	REVISION	ZONE	DR	CHKR	APPROVED	DATE
ERK13976	A	1	PRODUCTION RELEASE	-	MD	SB	MATTHEWS	15/01/07
ERK14230	B	-	-----	-	MD	SB	WHITTING	25/04/07



0155_4154_02 100mm NOMINAL BORE



0155_4157_02 100mm NOMINAL BORE

DO NOT SCALE PRINT	TOLERANCE UNLESS STATED ALL DIMENSIONS IN MM	SIN TO	NAME	DATE		CUMMINS POWER GENERATION COLUMBUS AVENUE, MANSTON, RANGSATE KENT, CT12 5BF, ENGLAND, UK
	1 ± 0.3 2, X ± 1 3, XX ± 0.5	COPIED LEAD THEO. ANGLE PROJECTION	DRAWN M DIXIT 15/01/07	DATE 15/01/07		
ANG TOL ± 1.0°	0.00 - 0.09 ±0.15/0.08 0.10 - 0.99 ±0.20/0.10 1.00 - 11.99 ±0.30/0.15 12.00 - 24.99 ±0.30/0.15	THIS DOCUMENT IS THE PROPERTY OF CUMMINS POWER GENERATION. IT CONTAINS PROPRIETARY AND CONFIDENTIAL INFORMATION WHICH MUST NOT BE REPRODUCED, COPIED OR DISCLOSED OTHER THAN EXPRESSLY AUTHORIZED BY CUMMINS POWER GENERATION OR ITS REPRESENTATIVE.	CHECK S BAVISKAR 15/01/07	APPR J MATTHEWS 15/01/07	SITE CODE	PGK 0500-4679
DRAWN TO SCALE OF: 1:10		FOR INTERPRETATION TOLERANCES USE AND SEE 300 PART 2-11	1 FIRST USED ON OSB7			SHEET NO. 2 OF 2 A1